

**GENERAL NOTES**

- SEE LIGHTING PLANS FOR LIGHT FIXTURES MOUNTED TO BUILDINGS. THIS IS SITE LIGHTING ONLY.
- COORDINATE LOCATIONS OF CONDUITS W/ DECKING ARCHITECT.
- PROVIDE PULL BOXES (4) NEAR EACH BUILDING FOR: POWER, TELEPHONE, CABLE TV, FIRE ALARM AND COORDINATE LOCATIONS OF PULLBOXES W/ ARCHITECT.
- EXTERIOR FIXTURES CONTROLLED BY PHOTOCELL. MOUNT PHOTOCELL ON ROOF AND PROVIDE MANUAL OVERRIDE AT PANEL.
- COORDINATE LOCATION OF UNDERGROUND CONDUITS W/ CONTRACTOR AND PHASING ARCHITECT.
- ALL EXTERIOR RECEPTICLES SHALL BE WP/GFI.

**SHEET NOTES**

- IN PHASE II OF PROJECT, REMOVE (E) PANEL B AT PELICAN BLDG. AND PANEL C AT SANDPIPER. PROVIDE PULL CAN IN (E) LOCATION, IF POSSIBLE. PROVIDE NEW 100A NEMA 3R 120/208V, 3ø, 4W PANEL WITH SAME BREAKER CONFIGURATION AS ORIGINAL PANEL B. INSTALL IN LOCATION APPROVED BY ARCHITECT. MAKE ALL CONNECTIONS.
- SWITCHBOARD DIMENSIONS:  
PULL SECTION 30"W, 24"D  
DISTRIBUTION SECTION 36"W, 24"D  
SECTIONS 90" TALL  
NEMA 3R ENCLOSURE, W/ DOORS  
W/ LOAD CENTER (LC)  
PROVIDE 4" HOUSEKEEPING PAD
- TTB (TELEPHONE TERMINAL BOARDS) NOT SHOWN TO SCALE. TTB IN ROOM 117 (NORTH) AND ROOM 137 (SOUTH)
- COORDINATE LOCATION OF EXTERNAL RECEPTICLES W/ SCHOOL AND ARCHITECT.
- CONNECT TO SPARE CIRCUIT IN PANEL C.
- EXTERIOR LIGHTS AT DECK AREA ARE PROVIDED WITH BATTERIES FOR EMERGENCY LIGHTING. THESE FIXTURES ARE PHOTO CELL CONTROLLED. FIXTURES WILL COME ON WHENEVER PG&E (NORMAL POWER) IS UNAVAILABLE. USE CONTROL CIRCUIT SHOWN BELOW.
- PROVIDE 2#10 & 1#12G IN 2" CONDUIT FOR PATH LIGHTING (VOLTAGE DROP)
- PG&E TO DETERMINE LOCATION OF TRANSFORMER (POLE OR PAD MOUNT). IF PAD MOUNT, PROVIDE 36"x60" PULL BOX PER PG&E STANDARDS. PROVIDE RISER, SWEEP PER PG&E GREEN BOOK. IF PAD MOUNT TRANSFORMER, PROVIDE TRANSFORMER PAD. BOTH CASES PROVIDE (2) 5" CONDUITS TO MSB.

**ABBREVIATIONS**

- DF - DRINKING FOUNTAIN  
INT - LIGHT FIXTURE CIRCUITING SHOWN ON INTERIOR PLANS (BLDG PLANS)  
IR - IRRIGATION CONTROLLER

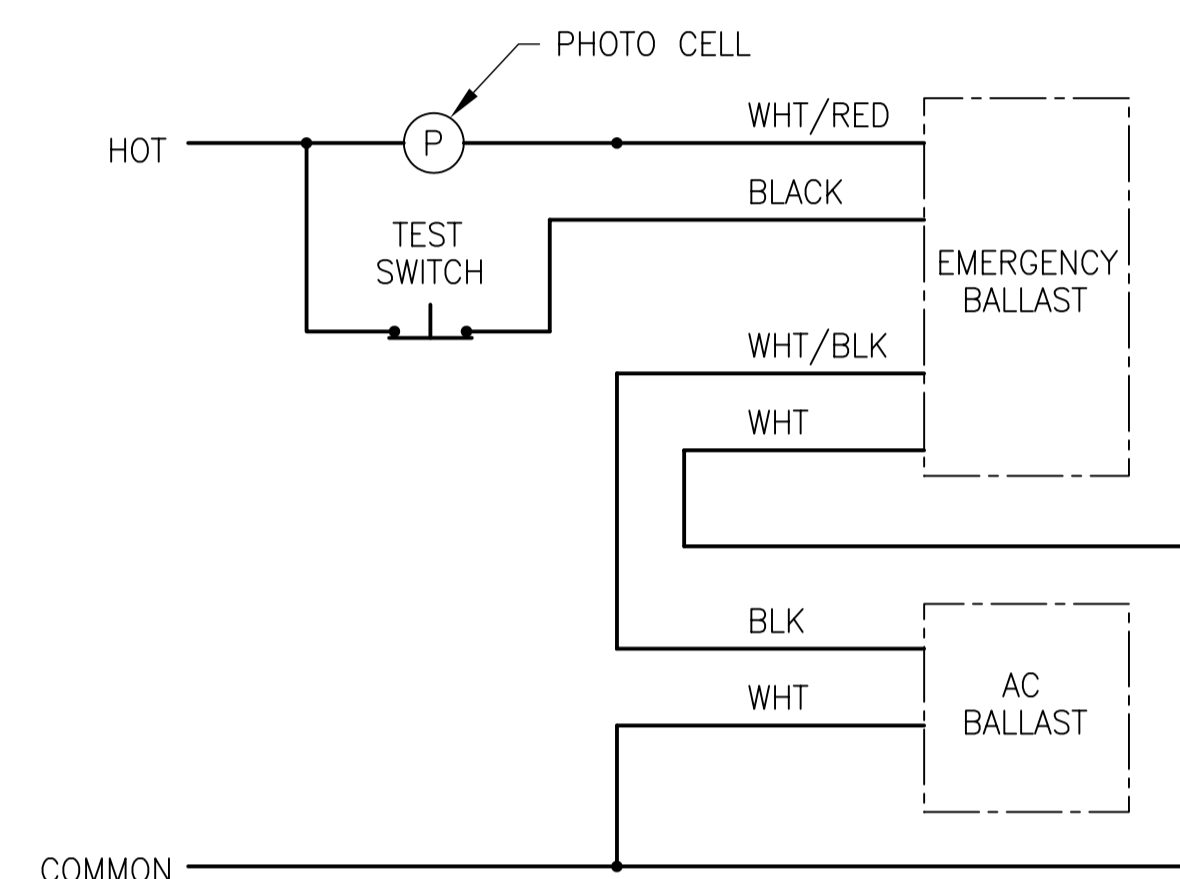
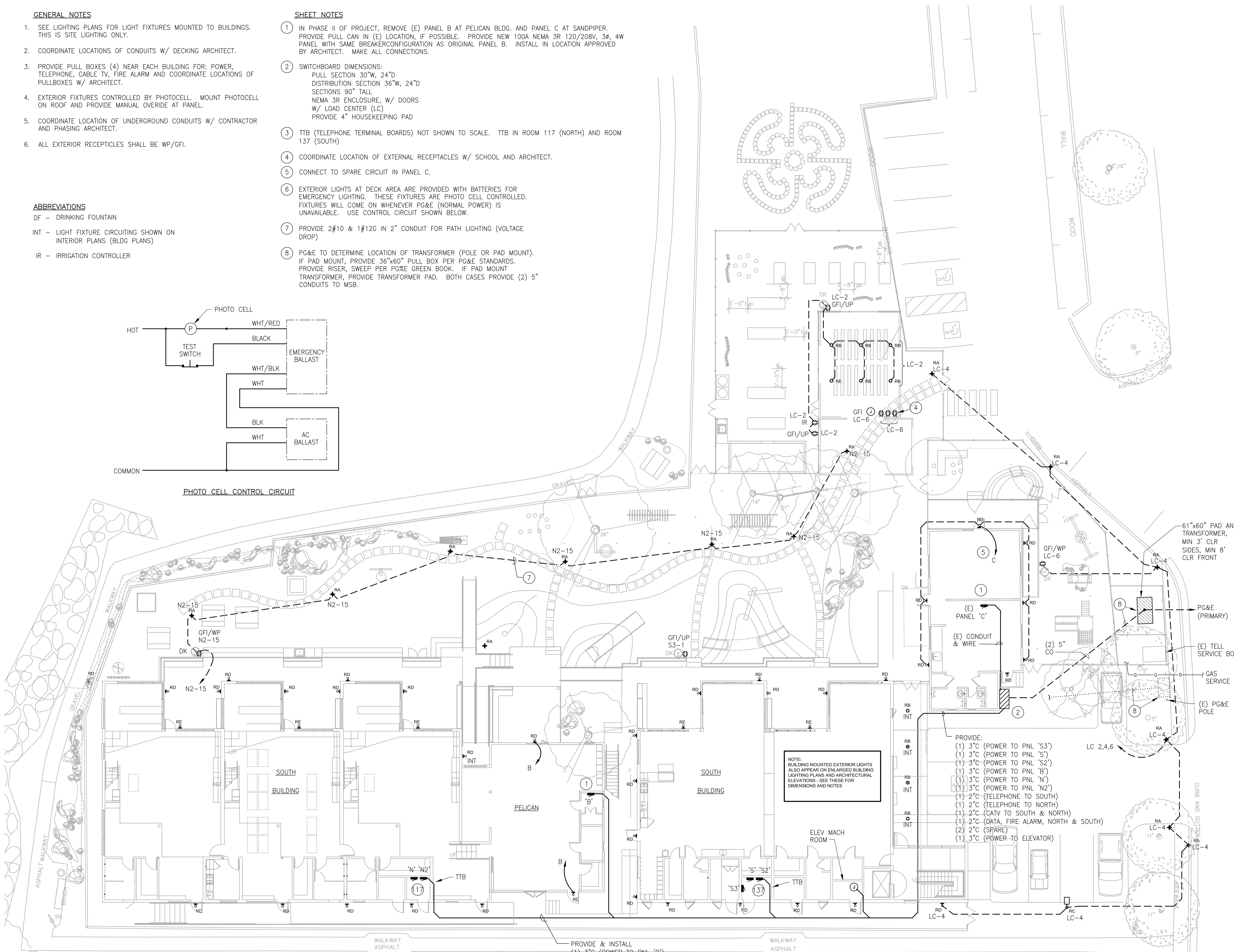


PHOTO CELL CONTROL CIRCUIT



- PROVIDE:
- (1) 3" C (POWER TO PNL 'S3')
  - (1) 3" C (POWER TO PNL 'S')
  - (1) 3" C (POWER TO PNL 'S2')
  - (1) 3" C (POWER TO PNL 'B')
  - (1) 3" C (POWER TO PNL 'N')
  - (1) 3" C (POWER TO PNL 'N2')
  - (1) 2" C (TELEPHONE TO SOUTH)
  - (1) 2" C (TELEPHONE TO NORTH)
  - (1) 2" C (CATV TO SOUTH & NORTH)
  - (1) 2" C (DATA, FIRE ALARM, NORTH & SOUTH)
  - (2) 2" C (SPARE)
  - (1) 3" C (POWER TO ELEVATOR)

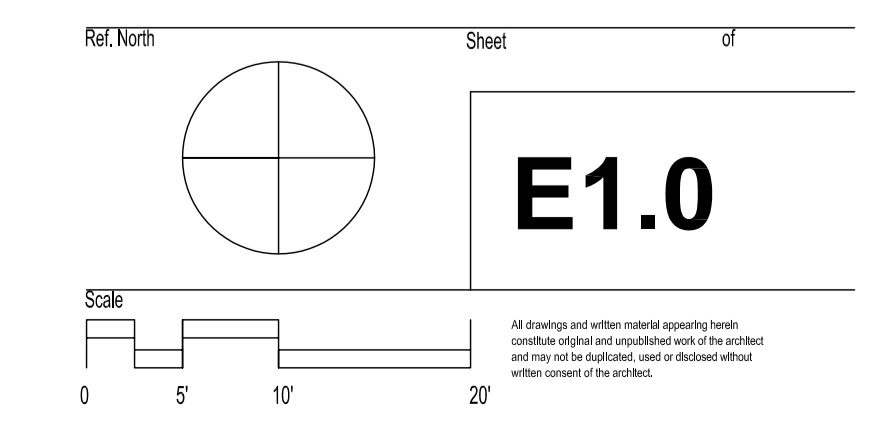
NOTE: BUILDING MOUNTED EXTERIOR LIGHTS ALSO APPEAR ON ENLARGED BUILDING LIGHTING PLANS AND ARCHITECTURAL ELEVATIONS - SEE THESE FOR DIMENSIONS AND NOTES

- PROVIDE & INSTALL
- (1) 3" C (POWER TO PNL 'B')
  - (1) 3" C (POWER TO PNL 'N')
  - (1) 3" C (POWER TO PNL 'N2')
  - (1) 2" C (TELEPHONE)
  - (1) 2" C (CATV)
  - (1) 2" C (DATA, FIRE ALARM)
  - (1) 2" C (SPARE)

ALTHOUGH THE ARCHITECT HAS ENDEAVORED TO SHOW ALL EXISTING UNDERGROUND OR ABOVE-GROUND UTILITIES AT THE PROJECT SITE, ALL UTILITY LOCATIONS ARE NOT NECESSARILY KNOWN OR SHOWN. WITHOUT LIMITATION, THE CONTRACTOR SHALL BE RESPONSIBLE AT THE CONTRACTOR'S OWN COST FOR ALL WORK EXPENSE, OR SPECIAL PRECAUTIONS CAUSED BY THE EXISTENCE OR PROXIMITY OF UTILITIES ENCOUNTERED AT THE SITE OR IN THE PERFORMANCE OF THE PROJECT WORK INCLUDING, WITHOUT LIMITATION, REPAIR OF ANY DAMAGE THAT MAY RESULT INCLUDING ANY DAMAGE RESULTING FROM HAND OR EXPLORATORY EXCAVATION. THE CONTRACTOR IS CAUTIONED THAT THE UTILITIES ENCOUNTERED AT THE SITE MAY INCLUDE COMMUNICATION CABLES, ELECTRICAL CABLES, CONDUCTING HIGH VOLTAGE, GAS PIPING, WATER PIPING, STORM DRAIN LINES, SEWER LINES, IRRIGATION LINES, ETC. WHEN EXCAVATING IN THE VICINITY OF DUCTS ENCLOSING SUCH CABLES, PIPING, LINES AND DUCTS SHALL BE EXPOSED BY CAREFUL HAND EXCAVATION SO AS NOT TO DAMAGE THE DUCTS, CABLES, PIPING AND/OR LINES NOR CAUSE INJURY TO PERSON. SUITABLE WARNING SIGNS, BARRICADES AND SAFETY DEVICES SHALL BE ERECTED WHENEVER NECESSARY OR APPROPRIATE FOR PUBLIC UTILITIES. BEFORE DIGGING, TELEPHONE USA, 1-800-642-2444.

Rev.	Date	Issues and Revisions	By	Check
	11/19/2002	50% D.D.		
4	02/19/2003	100% D.D.		
	5/05/2003	CD COORDINATION ISSUE		
5	5/17/03	PERMIT / 100% CD		

Project Name: **Marin Montessori**  
Project Number: **2104**  
Description: **SITE ELECTRICAL PLAN**



**E1.0**